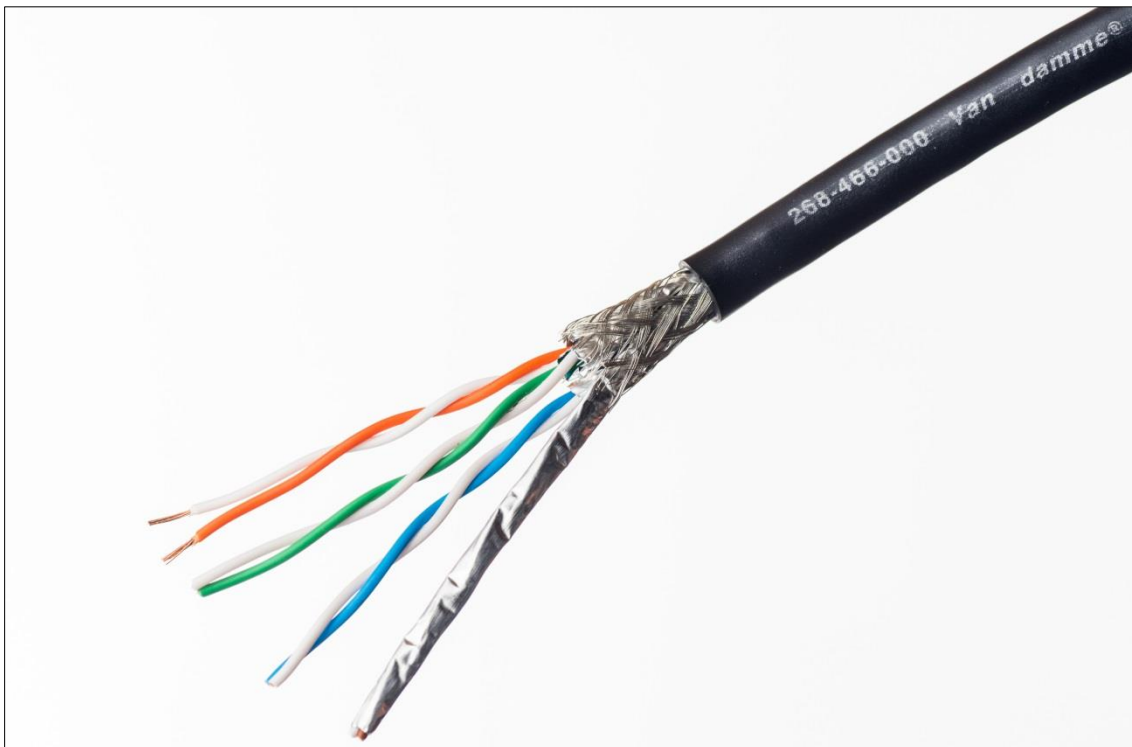


SEE NO EVIL HEAR NO EVIL

VAN DAMME TOURCAT CAT 6A FLEXIBLE S/FTP



Van Damme TourCat Cat 6_A S/FTP stranded conductor is a flexible PVC jacketed 26 AWG stranded conductor cable with individually screened pairs and a 75 % coverage overall braided screen. Suitable for Gigabit and 100 Mbit data and Ethernet based digital audio & video transmissions to the maximum length shown in the Application Notes below.

KEY BENEFITS



Flexibility



Category 6A
 TIA/EIA-568-C-2

MATERIALS



Oxygen Free
 Copper



Flexible PVC



Skin-Foam-
 Skin
 Dielectric

APPLICATIONS



Broadcast



Presentations



Live Sound

SEE NO EVIL HEAR NO EVIL

Applications

- Patch cords and link cables for Ethernet and Ethernet based protocols
- Flexible and robust for touring and dynamic use
- Ideal for use with the Neutrik Cat 6A Ethercon

Application Notes

- Meets the requirements of Category 6A TIA/EIA-568-C-2 and ISO/IEC 11801 Class EA
- Suitable for Gigabit and 100 Mbit to a maximum recommended channel link distance of 75 metres
- Suitable for 10G Cat 6A to a maximum recommended channel link distance of 60 metres
- Tested using a Fluke DTX1800 cable verifier. Longer runs are possible but are not guaranteed

Mechanical Specification

Conductor	7 x 0.16 mm bare oxygen free copper
Conductor size	7 x 0.16 mm, 0.14 mm ² , AWG 26/7
Dielectric	Skin/Foam/Skin Polyethylene
Diameter	1.02 ± 0.10 mm
Colour Code	Pair 1: White-Blue, Pair 2: White-Orange, Pair 3: White-Green, Pair 4: White-Brown
Pair Screen	Aluminium/Polyester foil > 125% coverage
Overall Screen	0.10 x 16 x 9 tinned copper braid 75 ± 5 % coverage
Jacket material	Flexible PVC Jet Black RAL 9005
Overall diameter	6.50 ± 0.20 mm
Bend radius	10 x overall diameter
Operating temperature	-20 to +80 °C

Electrical Specification

Conductor resistance		≤ 142 Ohms/km
Characteristic Impedance (Ω)	1-100 MHz	100 ± 15
	100-250 MHz	100 ± 20
	250-500 MHz	100 ± 25
Capacitance (core to core)		54 pF/m
Velocity of Propagation		68 %
Skew		< 0.20 ns

Frequency (MHz)	Attenuation (dB/100m)	NEXT (dB)	PSNEXT (dB)	ELFEXT (dB/100m)	PSELFEXT (dB/100m)	Return Loss (dB)
4	5.80	66.30	63.30	56.00	53.00	23.00
10	9.00	60.30	57.30	48.00	45.00	25.00
16	11.40	57.20	54.20	43.90	40.90	25.00
31.25	16.10	52.90	49.90	38.10	35.10	23.60
62.50	23.30	48.40	45.40	32.10	29.10	21.50
100	29.90	45.30	42.30	28.00	25.00	20.10
250	49.70	39.30	36.30	20.00	17.00	17.30
400	65.00	36.30	33.30	16.00	13.00	15.90
500	74.10	34.80	31.80	14.00	11.00	15.20

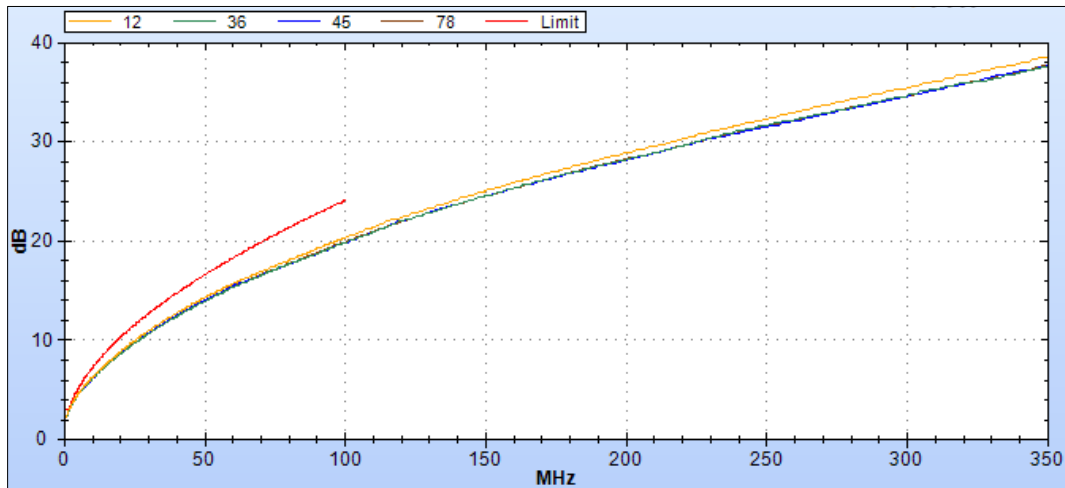
SEE NO EVIL HEAR NO EVIL

Fluke DTX1800 Test Results:

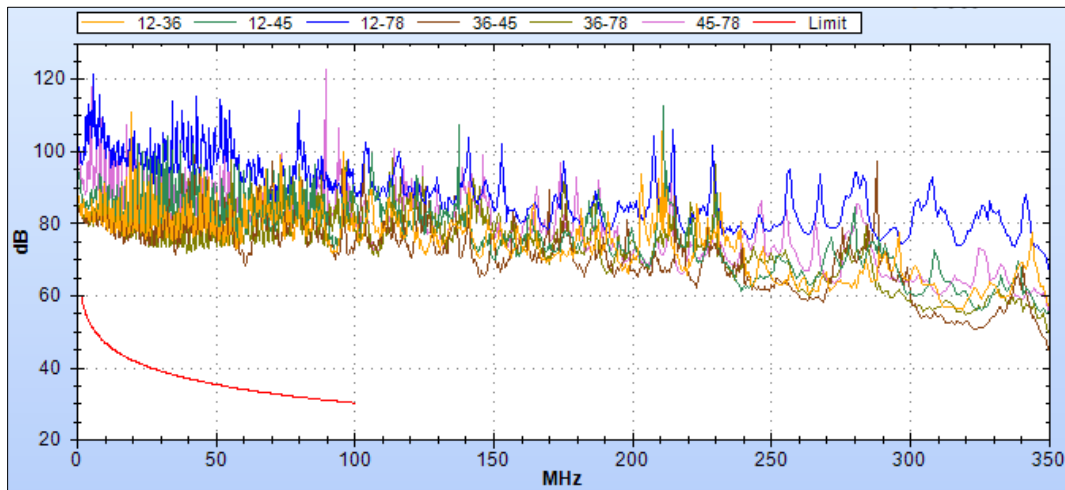
NB All test results are for 75 metres shielded RJ45 termination (S/FTP), Category 5E channel link

Red line denotes performance limits

ATTENUATION

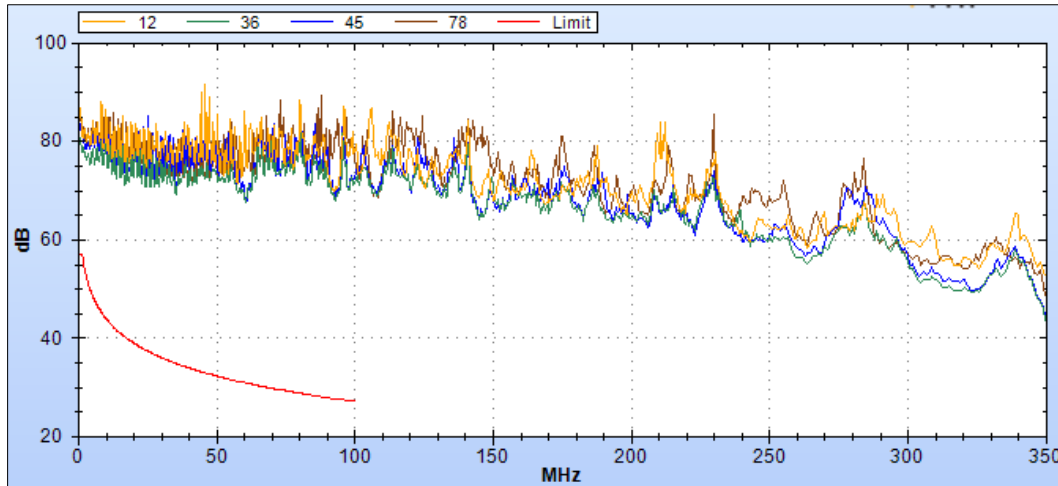


NEXT (Near End Cross Talk)

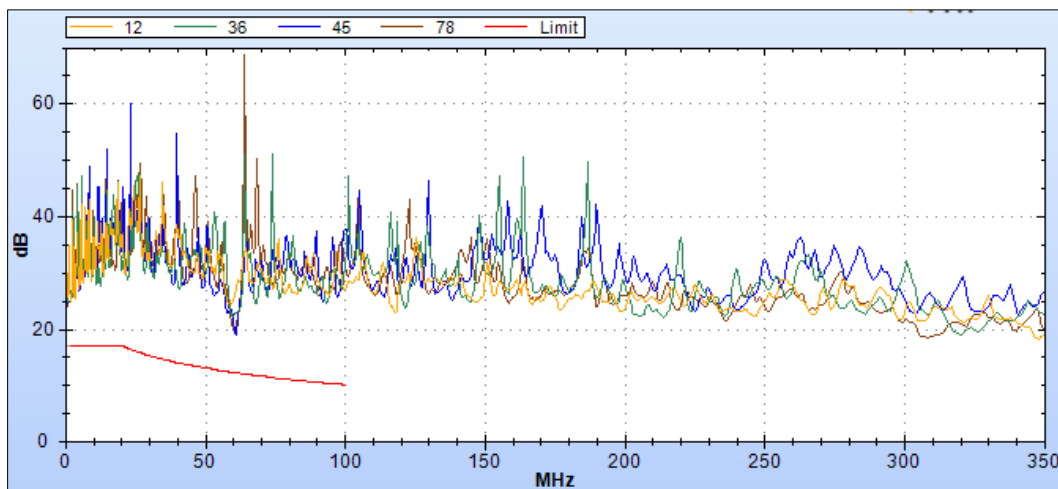


SEE NO EVIL HEAR NO EVIL

PS-NEXT (Power Sum Near End Crosstalk)



RETURN LOSS



Part Number & Description

Part number	Description	Max. Reel length
268-466-000	Van Damme TourCat Cat 6A Flexible S/FTP	500 m



SEE NO EVIL HEAR NO EVIL

Recommended RJ45 Connectors

Van Damme Shielded Cat 6A RJ45, part no. 351-000-002

Neutrik NE8MX6-T Ethercon cable connector (nickel)

Neutrik NE8MX6-B-T Ethercon cable connector (black)

Neutrik NE8FDX-Y6 Ethercon chassis IDC connector (nickel)

Neutrik NE8FDX-B-Y6 Ethercon chassis IDC connector (black)

Connector selection criteria:

Conductor size 26AWG stranded; conductor diameter 1.02 mm; overall diameter 6.50 mm

Compliance

TIA/EIA-568-C-2

ISO/IEC 11801

RoHS 2011/65/EU

Restriction of Hazardous Substances

REACH

Registration, Evaluation, Authorisation and Restriction of Chemicals